



**RM45/52**

**Safety, Operations & Maintenance Instructions**

## INTRODUCTION

This manual contains information concerned with safe practices when operating the machine, safety precautions that are necessary during operation, maintenance instructions and troubleshooting.

Before operating the machine it is imperative to have read and understood this manual. The instructions of this manual are intended to be read and followed to ensure the proper running of the RM45/52 and the safety of the user.

In the case of sale or transfer of the machine, this manual must be handed over. In the event that this manual is damaged or lost, the owner must ask the manufacturer or the former owner for a copy. This manual is to be considered as an integral part of the machine.

The information conveyed on this manual is reflective of the machine at point of sale. The manufacturer has the right to modify the machine for technical or commercial reasons and this does not make the manual unsuitable for use.

The copyright for this manual belongs to the manufacturer. The technical texts, images and pictures within this manual cannot be published or used, completely or in part, without written consent from the manufacturer.

# Contents

<b>INFORMATION ABOUT THE MACHINE .....</b>	<b>4</b>
<b>INTENDED USE OF THE RM45/52.....</b>	<b>4</b>
<b>MACHINE DESCRIPTION .....</b>	<b>4</b>
<b>IDENTIFICATION OF MAIN PARTS.....</b>	<b>5</b>
<b>SPECIFICATIONS.....</b>	<b>6</b>
<b>ACCIDENT PREVENTION MEASURES.....</b>	<b>7</b>
<b>SAFETY LABELS AND DESCRIPTIONS.....</b>	<b>8</b>
<b>AFTER A PERIOD OF INACTIVITY .....</b>	<b>8</b>
<b>OPERATING INSTRUCTIONS.....</b>	<b>9</b>
<b>BEFORE USE .....</b>	<b>9</b>
<b>DURING OPERATION.....</b>	<b>9</b>
<b>IF THE MACHINE GETS BLOCKED .....</b>	<b>10</b>
<b>AFTER USE.....</b>	<b>10</b>
<b>GENERAL MAINTENANCE .....</b>	<b>11</b>
<b>ADJUSTING THE CUTTER ASSEMBLY.....</b>	<b>11</b>
<b>DRIVE CHAIN MAINTENANCE AND ADJUSTMENT .....</b>	<b>12</b>
<b>STORAGE.....</b>	<b>12</b>
<b>CLEANING .....</b>	<b>13</b>
<b>PARTS LIST .....</b>	<b>14</b>
<b>WARRANTY POLICY .....</b>	<b>16</b>
<b>MACHINE MAINTENANCE SCHEDULE .....</b>	<b>16</b>
<b>NOTES.....</b>	<b>17</b>

# INFORMATION ABOUT THE MACHINE

## INTENDED USE OF THE RM45/52

The Truyard RM45/52 is a cylinder mower designed to evenly and precisely cut grass. It is not designed to cut tall, overgrown grass or have anything other than grass pass through it.

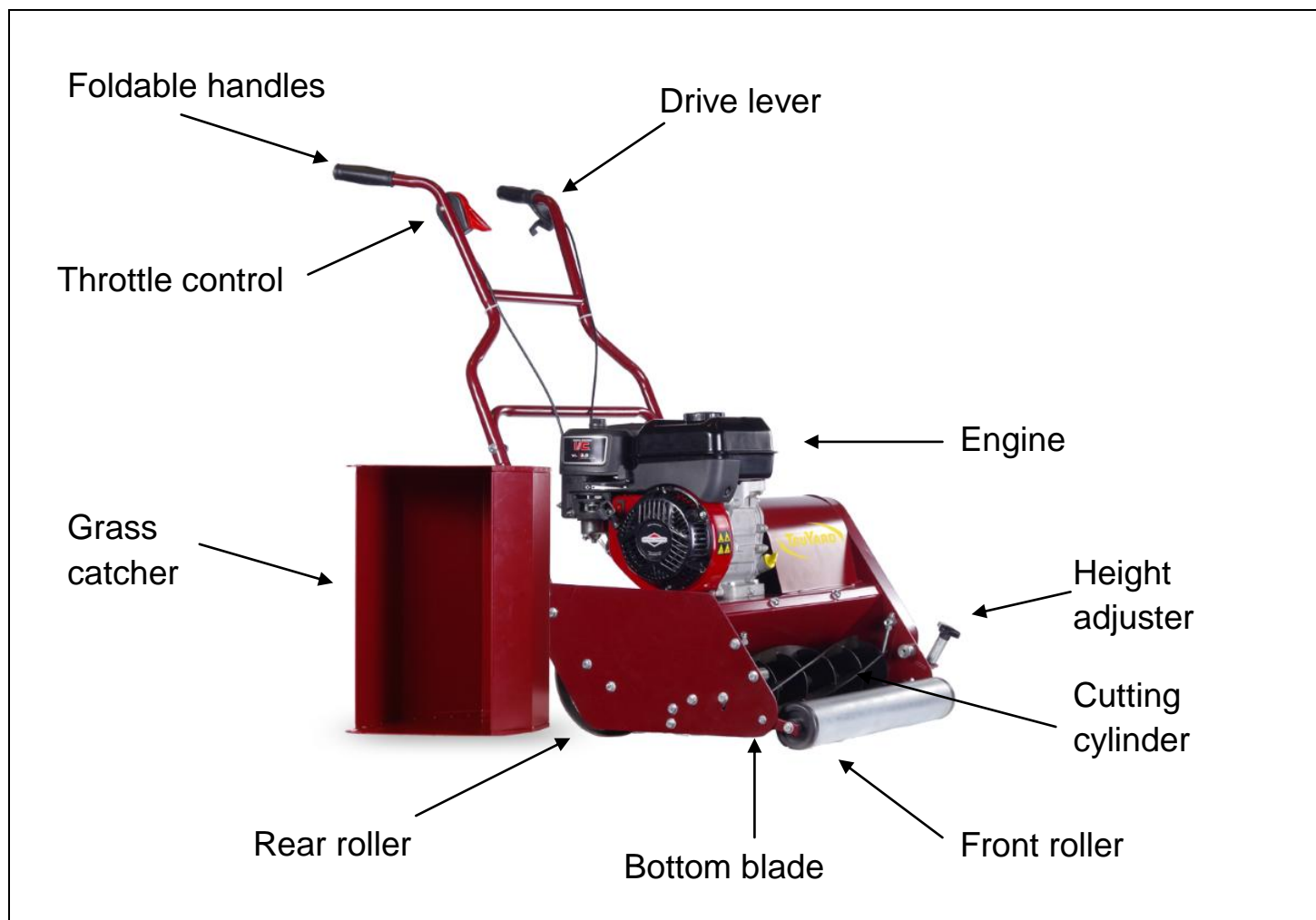
## MACHINE DESCRIPTION

The Truyard RM45/52's mowing mechanism consists of a cutting cylinder with a bottom blade. As the machine moves forwards, the bottom blade holds the grass in a vertical position. The rotating cutting cylinder, coming into contact with the bottom blade, cuts the grass above the bottom blade. Over time the cylinder height will need to be adjusted lower to maintain a perfect cut.

The RM45/52 consists of the following features:

- Cutting cylinder
- Bottom blade
- Drive lever
- Throttle control
- Front roller
- Rear roller
- Engine
- Grass catcher
- Height adjuster
- Pair of foldable handles

## IDENTIFICATION OF MAIN PARTS



## SPECIFICATIONS

### RM45

Engine Specifications		Movement	
Engine	Honda GX200, Kohler 5.5hp or Kohler 5.5hp Key Start	Drive Method	Self propelled with automated clutch
Engine Type	Petrol	Rear Roller	Single section 4.8mm steel. Split Roller Optional extra.
Cutting System		Front Roller	Steel
Cylinder Cut Width	18" (450mm)	Machine Construction	
Cutting Cylinder	6/10 blade high carbon steel hardened.	Handles	Foldable for easy transport
Cutting Height	¼" – 1¼" 6mm - 32mm	Weight	70kg
Height adjustment	Fully adjustable with single height control	Grass Catcher	60 litre
Transmission	Chain drive with fully machined sprockets	Warranty Policy	
		Warranty	Domestic Application 2 years, Commercial Application 3 Months

### RM52

Engine Specifications		Movement	
Engine	Honda GX200, Kohler 5.5hp or Kohler 5.5hp Key Start	Drive Method	Self propelled with automated clutch
Engine Type	Petrol	Rear Roller	Single section 4.8mm steel. Split Roller Optional extra.
Cutting System		Front Roller	Steel
Cylinder Cut Width	21" (520mm)	Machine Construction	
Cutting Cylinder	6/10 blade high carbon steel hardened.	Handles	Foldable for easy transportation
Cutting Height	¼" – 1¼" 6mm - 32mm	Weight	74kg
Height adjustment	Fully adjustable with single height control	Grass Catcher	70 litre
Transmission	Chain drive with fully machined sprockets	Warranty Policy	
		Warranty	Domestic Application 2 years, Commercial Application 3 Months

# SAFETY PRECAUTIONS

## ACCIDENT PREVENTION MEASURES



***STRICT ADHERANCE TO THE FOLLOWING RULES, PRECAUTIONS AND SAFETY MEASURES LISTED HERE MUST BE CONDUCTED TO AVOID THE DANGER OF ACCIDENT AND DAMAGE TO PEOPLE AND THE MACHINE.***

- 1) Ensure that the operator of the machine has read and understood fully this manual and the engine manual
- 2) Always wear suitable footwear. Do not use in bare feet
- 3) Always stop the engine and disconnect the sparkplugs when guards are not in place
- 4) Check that the lawn to be mowed is free of all foreign debris. This includes and is not limited to rocks, nails, dog bones. Do not come into contact with kerbs or reticulation.
- 5) Do not allow children to come near the RM45/52. Always ensure that children are at a safe distance and are well away from the machine
- 6) Do not put hands whatsoever inside the machine or near the belt or blade while the machine is running
- 7) Read the engine manufactures operating instructions carefully. Do not alter governor settings or over speed the engine
- 8) Carefully follow the refuelling safety instructions when refuelling the engine:
  - Always refuel the RM45/52 outdoors in a well ventilated area
  - Ensure the engine is turned off and cooled before beginning refuelling process.
  - Keep all ignition and heat sources clear of the refuelling area.
  - If spillage occurs mop up immediately and wait a suitable time so the fumes disappear
  - When storing fuel make sure it is in a suitably designed container (AS/NZS 2906:2001) and it is stored in a cool dry place.
- 9) Use your RM45/52 only in daylight when visibility is good
- 10) When using the RM45/52 slopes should be treated with caution. Never place the RM45/52 on uneven ground
- 11) Never leave the RM45/52 unattended whilst engine is running
- 12) Do not use RM45/52 in confined spaces with no ventilation
- 13) It is advisable to wear safety glasses and hearing protection whilst operating the RM45/52
- 14) Always operate with all guards in place
- 15) When mowing, slopes should be treated with caution. Never place mower on uneven ground

## SAFETY LABELS AND DESCRIPTIONS

	<p><b>CAUTION</b> – keep hands and feet away from the discharge and inlet openings on the machine as this could cause injury</p>
	<p><b>CAUTION</b> – ensure that the operator has read and understood this manual before operating the machine to prevent injury</p>
	<p><b>CAUTION</b> – keep hands and feet away from openings on the machine to prevent injury</p>

## AFTER A PERIOD OF INACTIVITY

Ensure the following checks have been done on the RM45/52 before operation after a long period of inactivity:

- Check that the machine is undamaged and all guards are attached
- Check all the mechanical parts of the machine are not rusty and are in working condition
- Ensure the cutting cylinder and rollers rotate freely and are properly secured to the machine
- Ensure that the engine has sufficient oil and fuel
- Check all nuts and bolts are tight



# OPERATING INSTRUCTIONS

## BEFORE USE

Before operating the machine it is important to ensure the following to use the machine to its full capability and to keep the operator and the surrounding area safe.

- Make sure that the operator has read and understood how to use the engine as per the manufacturer's instructions
- Ensure that the air cleaner is clean and oil and fuel in the engine are as per the engine manufacturer's instructions.
- Check that all guards and parts are in place
- Make sure the throttle control is at its lowest setting
- Ensure that the RM45/52 is located on flat, even ground and that there are no people or animals in the vicinity of its working function
- Ensure that the operator has read and understood this manual, including how to control the machine
- Wear the prescribed safety equipment
- Check that the lawn that is going to be mowed by the RM45/52 does not contain any foreign objects such as rocks or nails that can damage the machine whilst it is in use

## DURING OPERATION

Once satisfied that the above criteria have been met, turn on the engine as per the manufactures instructions. Once running:

- Gently pull the throttle lever up until the cylinder starts to rotate. It does not need to be on full speed, just enough to get the cutting cylinder rotating. Once the cylinder is rotating gently pull up on the drive lever on the left had side.
- It is very important not to come into contact with and foreign debris such as rocks, kerbing, driveways or reticulation. If the cylinder hits something like that it will damage it. There could be costly repairs involved which are not covered by warranty.
- When the catcher is about half full you will need to empty it. To do so, put the throttle control in the bottom position and turn off the engine. Never empty the catcher whilst the engine is running and the cutting cylinder is rotating.

## **IF THE MACHINE GETS BLOCKED**

If the RM45/52's cutting cylinder stops rotating, the machine has become blocked. To remove the blockage, ensure that the machine has been turned off, the spark plug has been disconnected and that the flywheel has no power supply that will make it rotate while the material is being removed. Once the blockage has been taken out, the machine can be re-started.

## **AFTER USE**





When you have finished operation of the machine and have turned the engine off:

- Allow machine to cool down
- Check the machine over to see if there are any irregularities that could impede your next use
- Check fuel and oil levels for next use

# GENERAL MAINTENANCE

For the servicing of the machine it is strongly recommended, for safety and quality of the maintenance, for this to be conducted by authorised professionals from TruYard authorised dealers who know the machine. Always ensure that the RM45/52 is completely turned off before performing any maintenance with the spark plug removed.

## ADJUSTING THE CUTTER ASSEMBLY

	<p>Take off the chain case cover on the side of the machine using a 13mm spanner.</p>
	<p>Undo the bolt on the bearing housing that is holding the cylinder adjuster on both sides</p>
	<p>Loosen the nut <math>\frac{1}{4}</math> of a turn then gently turn each dome nut at the top of the adjuster in an anticlockwise direction. This will move the cutting cylinder closer to the bottom blade.</p>
	<p>Check that the chain from the cylinder to the top sprocket is tensioned correctly. If not adjust it. Retighten all nuts and bolts before using the mower.</p> <p><b>CAUTION: TIPPING THE RM BACKWARDS OVER 30° CAN DAMAGE THE ENGINE WHICH DOES NOT COME UNDER WARRANTY</b></p>

## DRIVE CHAIN MAINTENANCE AND ADJUSTMENT



Remove the chain case cover on the side of the mower. Clean away any built up dirt and grass clippings. Lubricate with chain oil to increase the life of your chains.



Check the chain tension. If loose, move the nylon adjuster to give the correct tension.

## STORAGE

In the case that the RM45/52 will not be used for an extended period, it is important to store the machine in a location that is sheltered from the weather to avoid damages to the machine.

The storage temperature recommended is between 0°C and 50°C.

Before this period in storage, it is recommended to:

- Properly clean the machine
- Ensure that the area in which the machine is to be stored is sheltered and the ground surface is flat and compact
- Perform a check of the machine to detect possible damages or irregularities and to ensure that the safety labels are undamaged and clearly visible

## **CLEANING**

Regularly clean the machine using only compressed air, blowing away wood dust and green waste residue. For this operation ensure that you wear protective gloves and eyewear.

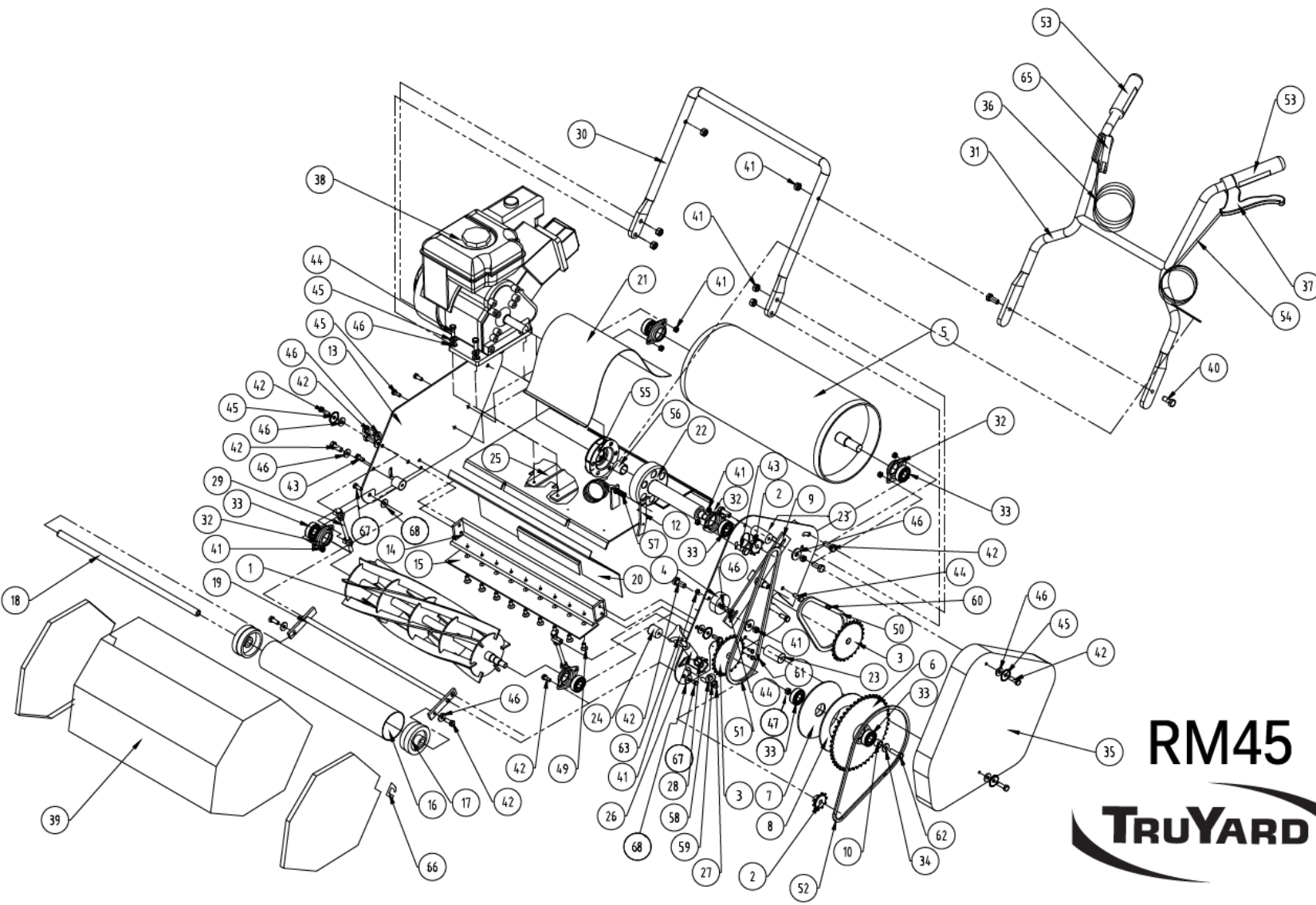
The durability of the mower will be greatly improved if you keep the mower free of built up grass around the engine, cylinder, chains and clutch.

Do not use a hose, or water flow, to clean the mower or engine after use.

## **TRANSPORTING THE MOWER**

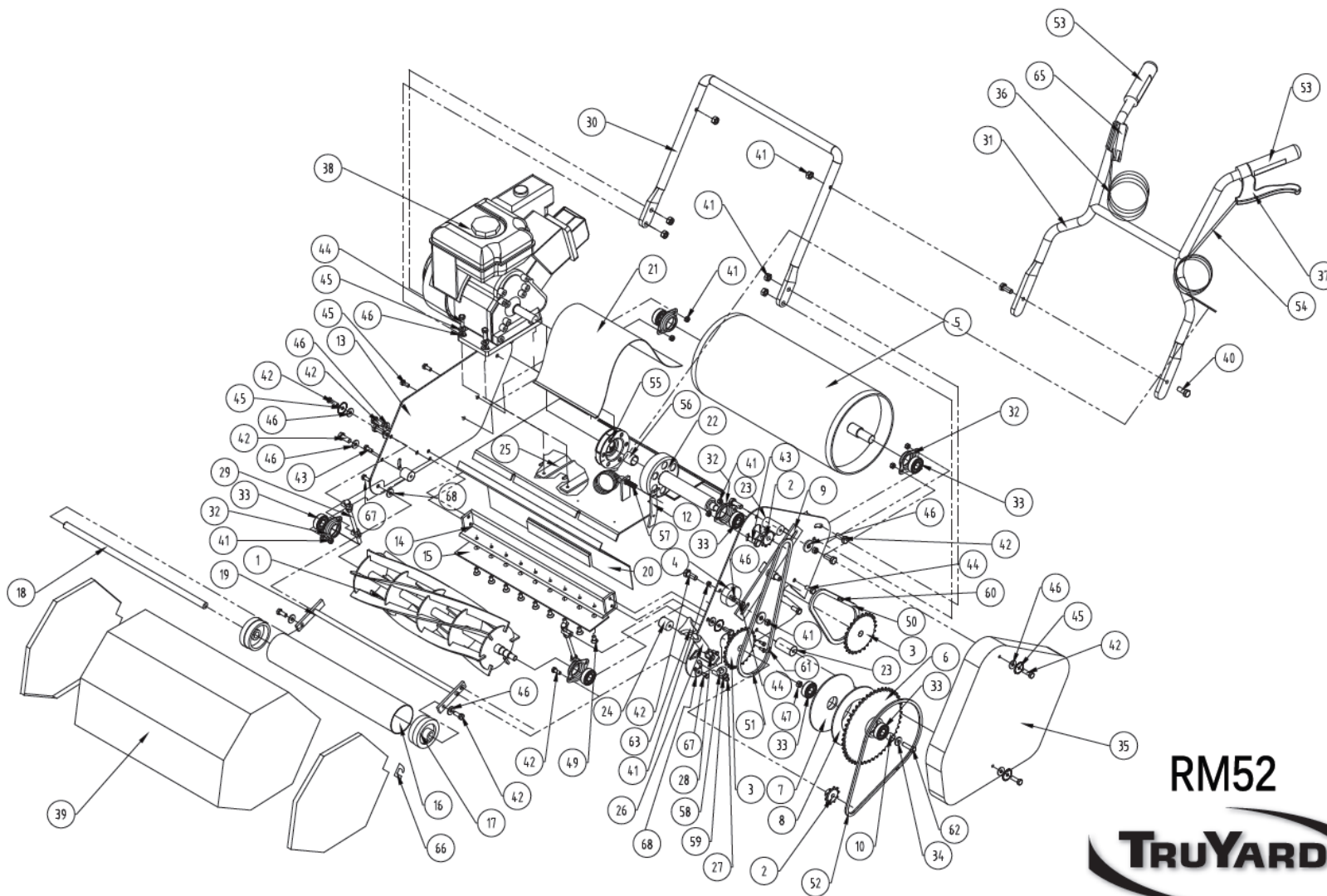
To prevent the mower falling backwards from acceleration, the handles should be securely lashed. The mower should be kept upright, as engine oil will run into the carburettor, exhaust and cylinder, if the mower falls or is placed on its back.

PARTS LIST



NO.	PART NO.		DESCRIPTION	QTY
1	13045001		CYLINDER 6 BLADE	1
2	13045005		10 TOOTH SPROCKET	2
3	13045006		25 TOOTH SPROCKET	2
4	13045007		CHAIN ADJUSTER	1
5	13045010		REAR ROLLER	1
6	13045021		48 TOOTH SPROCKET	1
7	13045022		CLUTCH 14T SPROCKET	1
8	13045023		CLUTCH CORK	1
9	13045024/26		ADJUSTER PLATE	1
10	13045025		REAR ROLLER CLUTCH SLEEVE	1
12	13045027		REAR ROLLER CLUTCH LEVER	1
13	13045030		CHASSIS	1
14	13045041		SOLE PLATE ASSEMBLY	1
15	13045043		BOTTOM BLADE	1
16	13045053		FRONT ROLLER	1
17	13045053-1		END CAP	2
18	13045054		SHAFT	1
19	13045055		FRONT ROLLER SHAFT & PLATE	1
20	13045060		DEFLECTOR	1
21	13045062		CLUTCH COVER	1
22	13045063		CLUTCH SHAFT AND HOUSING	1
23	13045064		CHAIN CASE SPACER L52	2
24	13045064 A		CATCHER SUPPORT	2
25	13045068		MOTOR MOUNTING PLATE	2
26	13045071		FRONT ROLLER ADJUSTER SHAFT	1
27	13045072		FRONT ROLLER ADJUSTER BOLT	1
28	13045073		FRONT ROLLER ADJUSTER BUSH	1
29	13045081		CYLINDER ADJUSTER	2
30	13045090 B		HANDLE BOTTOM	1
31	13045090 T		HANDLE TOP	1
32	1901510		BEARING HOUSING	5
33	1901505		BEARING	7
34	1901340		SPACER OD27	1
35	13045061		CHAIN COVER	1
36	1901670		THROTTLE CABLE	1
37	1901627		CLUTCH LEVER	1
38	—		ENGINE	1
39	13045065		GRASS CATCHER	1
40	1901103		BOLT M8x40	2
41	1901230		NUT M8	21
42	1901101		BOLT M8x20	16
43	1901105		Bolt M8x15	8
44	1901108		Bolt M8x30	6
45	1901301		WASHER M8 STAR	8
46	1901300		WASHER M8	19
47	1901200		NUT M6	1
48	1901114		BOLT M10X20	2
49	1901401		FLATHEAD CAP SCREW M8X10	9
50	1901629		REAR ROLLER	2
51	1901630		CLUTCH CHAIN	2
52	1901631		CYLINDER CHAIN	1
53	1901628		HANDLE GRIP	2
54	13045096		CLUTCH CABLE	1
55	1901625		CLUTCH 3/4"	1
56	1901626		CLUTCH BUSH	1
57	1901700		CLUTCH SPRING	1
58	1901330		WASHER M12	1
59	1901411		CIR-CLIP OD 9	1
60	1901632		CONECTING LINK	1
61	1901633		HALF LINK CHAIN	1
62	1901402		SCREW M6x75	1
63	1901418		KNOB	1
65	1901671		THROTTLE LEVER	1
66	13045066		CATCHER HOOK	2
67	1901154		BOLT M6x10	2
68	1901320		WASHER M6	2
69	1901421		KEY 14 x 5 MM	1
70	1901400		GRUB SCREW	1





RM52

**TruYARD**

NO.	PART NO.	DESCRIPTION	QTY
1	13052001	CYLINDER 6 BLADE	1
2	13045005	10 TOOTH SPROCKET	2
3	13045006	25 TOOTH SPROCKET	2
4	13045007	CHAIN ADJUSTER	1
5	13052010	REAR ROLLER	1
6	13045021	48 TOOTH SPROCKET	1
7	13045022	CLUTCH 14T SPROCKET	1
8	13045023	CLUTCH CORK	1
9	13045024/26	ADJUSTER PLATE	1
10	13045025	REAR ROLLER CLUTCH SLEEVE	1
12	13045027	REAR ROLLER CLUTCH LEVER	1
13	13052030	CHASSIS	1
14	13052041	SOLE PLATE ASSEMBLY	1
15	13052043	BOTTOM BLADE	1
16	13052053	FRONT ROLLER	1
17	13045053-1	END CAP	2
18	13052054	SHAFT	1
19	13052055	FRONT ROLLER SHAFT & PLATE	1
20	13052060	DEFLECTOR	1
21	13052062	CLUTCH COVER	1
22	13052063	CLUTCH SHAFT AND HOUSING	1
23	13045064	CHAIN CASE SPACER L52	2
24	13045064 A	CATCHER SUPPORT	2
25	13045068	MOTOR MOUNTING PLATE	2
26	13045071	FRONT ROLLER ADJUSTER SHAFT	1
27	13045072	FRONT ROLLER ADJUSTER BOLT	1
28	13045073	FRONT ROLLER ADJUSTER BUSH	1
29	13045081	CYLINDER ADJUSTER	2
30	13052090 B	HANDLE BOTTOM	1
31	13052090 T	HANDLE TOP	1
32	1901510	BEARING HOUSING	5
33	1901505	BEARING	7
34	1901340	SPACER OD27	1
35	13045061	CHAIN COVER	1
36	1901670	THROTTLE CABLE	1
37	1901627	CLUTCH LEVER	1
38	—	ENGINE	1
39	13052065	GRASS CATCHER	1
40	1901103	BOLT M8x40	2
41	1901230	NUT M8	21
42	1901101	BOLT M8x20	16
43	1901105	Bolt M8x15	8
44	1901108	Bolt M8x30	6
45	1901301	WASHER M8 STAR	8
46	1901300	WASHER M8	19
47	1901200	NUT M6	1
48	1901114	BOLT M10x20	2
49	1901401	FLATHEAD CAP SCREW M8x10	9
50	1901629	REAR ROLLER CHAIN	2
51	1901630	CLUTCH CHAIN	2
52	1901631	CYLINDER CHAIN	1
53	1901628	HANDLE GRIP	2
54	13045096	CLUTCH CABLE	1
55	1901625	CLUTCH 3/4"	1
56	1901626	CLUTCH BUSH	1
57	1901700	CLUTCH SPRING	1
58	1901330	WASHER M12	1
59	1901411	CIR-CLIP OD 9	1
60	1901632	CONNECTING LINK	1
61	1901633	HALF LINK CHAIN	1
62	1901402	SCREW M6x75	1
63	1901418	KNOB	1
65	1901671	THROTTLE LEVER	1
66	13045066	CATCHER HOOK	2
67	1901154	BOLT M6x10	2
68	1901320	WASHER M6	2
69	1901421	KEY 14 x 5 MM	1
70	1901400	GRUB SCREW	1

# WARRANTY POLICY

Under the warranty your RM45/52 is warranted for 2 years from the date of purchase against mechanical defects, faulty workmanship or material. 90 days for commercial use. This warranty covers only the replacement, repair or adjustment of any part which fails as a result of a fault in manufacture or assembly. Defective parts will be repaired or replaced without charge for labour or materials subject to the conditions detailed below.

## Warranty Exclusions, Limitations and Rights:

- 1) Any failure that results from accident, abuse or neglect is not covered by this warranty
- 2) Transport of the RM45/52 to and from the manufacturer, their agents or dealers, to be paid for by the owner
- 3) Proof of purchase date must be provided prior to the commencement of the warranty work
- 4) Any failure of parts or material that is contributable to fair wear
- 5) Any indirect or consequential loss, damage, costs or expenses suffered by the consumer that may result either directly or indirectly from the failure or malfunction of the product
- 6) Any repairs carried out other than those by authorised Truyard agents or dealers cancel this warranty
- 7) Engine warranty is separate and is in accordance with the Engine manufacturers express warranty

# MACHINE MAINTENANCE SCHEDULE

Bottom Blade	Inspect every 5 hours of use
Cutting Cylinder	Inspect blades for sharpness, burs and chips every 10 hours of use. If badly worn take to the dealer for sharpening.
Drive chain	Inspect every 10 hours of use lubricate if needed
Engine oil	Consult the manufacturers manual for these specifications



# NOTES

.....

.....

.....

.....

.....

.....

.....

.....

.....

.....

.....

.....

.....

.....